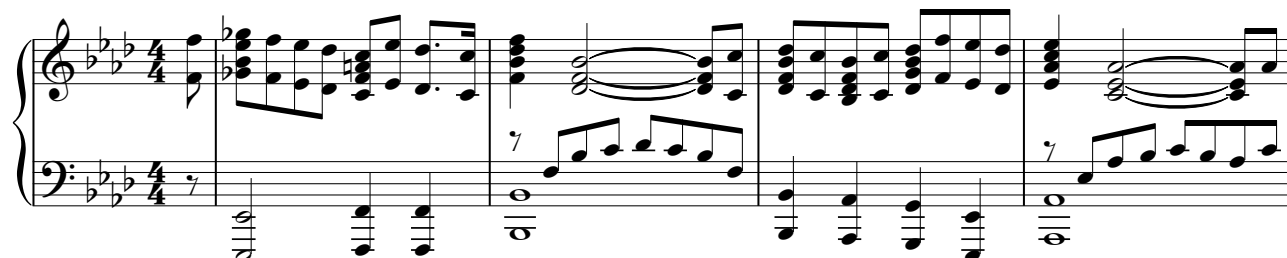


Когда придёшь, Спаситель...?

сл. и муз. В.С.



9



12



15

мир я гре-хов-ный пре-воз-мо-жешь? Здесь на зем-ле, Тво-я се-ковья ждёт Те-

18

мья! бя! Се-мья ведь ждёт Ты не ос-тавь Те-бя! ме-ня! Мы ждём Те-

21

бя! Мы ждём Те-бя! Гос-подь, Тво-я лю-бовь нас всех спа-

24

сла! Мы мо-лим: не ос-тавь Спа-си-тель, Бо-же! Мы

27

мо-лим: не ос-тавь Спа-си-тель, Бо - же! Хо - тим мы все пре-быть: в стра-

30

не чу-дес-ной жить, не ос - тавь, Гос - подь! Мы ждём Те-

33

бя! Мы ждём Те - бя! Гос-подь, Тво-я лю - бовь нас всех спа-

36

сла! Мы мо-лим: не ос-тавь Спа-си-тель, Бо - же! Мы

39

мо-лим: не ос-тавь Спа-си-тель, Бо - же! Хо - тим мы все пре-быть: в стра-

42

не чу-дес-ной жить, не ос - тавь, Гос - подь!

45

Мы ждём Те - бя! Мы ждём Те-

48

бя! Гос-подь, Тво-я лю-бовь нас всех спа - сла! Мы

51

мо-лим: не ос-тавь Спа-си-тель, Бо - же! Мы мо-лим: не ос-тавь Спа-си-тель,

This system contains measures 51, 52, and 53. The vocal line is in the bass clef with a key signature of three flats. The piano accompaniment is in the grand staff. Measure 51 features a vocal melody starting on a half note, followed by eighth notes. Measure 52 has a vocal melody with a half note and a quarter note, followed by a quarter rest. Measure 53 continues the vocal melody with eighth notes. The piano accompaniment consists of chords in the right hand and a steady eighth-note bass line in the left hand.

54

Бо - же! Хо - тим мы все пре-быть: в стра - не чу-дес-ной жить, не ос-

This system contains measures 54, 55, and 56. The vocal line continues in the bass clef. Measure 54 has a vocal melody with a half note and a quarter note, followed by a quarter rest. Measure 55 has a vocal melody with a half note and a quarter note, followed by a quarter rest. Measure 56 continues the vocal melody with eighth notes. The piano accompaniment continues with chords in the right hand and a steady eighth-note bass line in the left hand.

57

тавь, Гос - подь!

This system contains measures 57 and 58. The vocal line is in the bass clef. Measure 57 has a vocal melody with a half note and a quarter note, followed by a quarter rest. Measure 58 continues the vocal melody with a half note. The piano accompaniment continues with chords in the right hand and a steady eighth-note bass line in the left hand.

59

This system contains measures 59, 60, and 61. The vocal line is in the bass clef. Measure 59 has a vocal melody with a half note and a quarter note, followed by a quarter rest. Measure 60 continues the vocal melody with a half note. Measure 61 continues the vocal melody with a half note. The piano accompaniment continues with chords in the right hand and a steady eighth-note bass line in the left hand.